

# EOM API

This is the documentation for CFA's EOM API, which provides and consumes data for the End of Month UI in InFORM.

## Repo Location

The project can be found at: <http://svn.cfahome.com/cfaapps/eom-api-1.0/>

## Downloading the Repo

To download the repo, complete the following steps.

- Open the terminal (assuming you're using a mac)
- Create a directory called "eom-api"
- cd into the directory you created
- run the following command to checkout the repo (don't forget the period at the end of the command below)
  - `svn checkout http://svn.cfahome.com/cfaapps/eom-api-1.0/trunk/ .`

## Postman Tests

Postman test suite can be found at: <https://www.getpostman.com/collections/5192242d73f1ab57bf3b>

## SOAPUI Tests

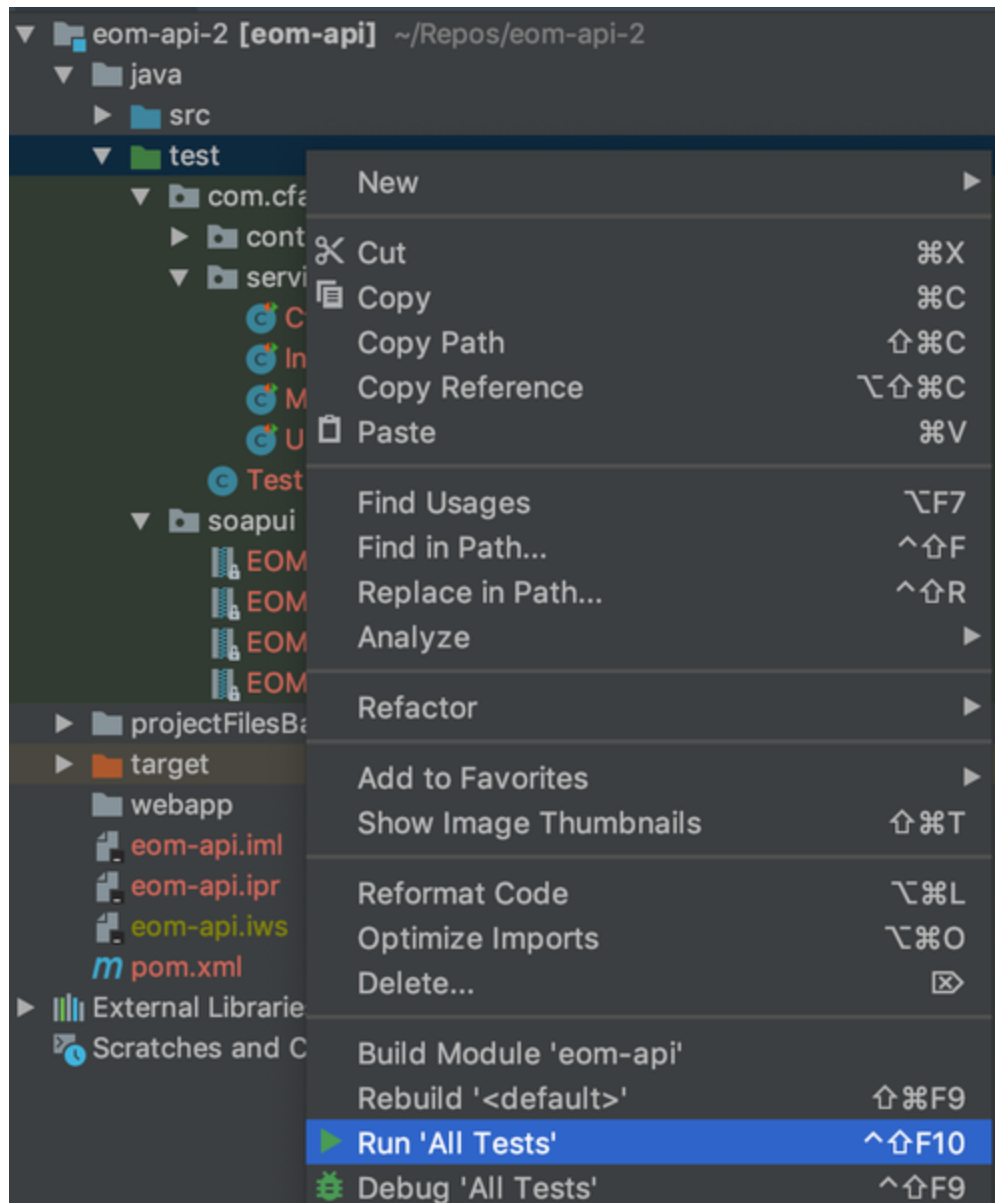
SOAPUI test suite (which should be the same as Postman test suite above) can be found within the repo: <http://svn.cfahome.com/cfaapps/eom-api-1.0/trunk/java/test/soapui/>

## How To Run Tests

### Running Unit Tests

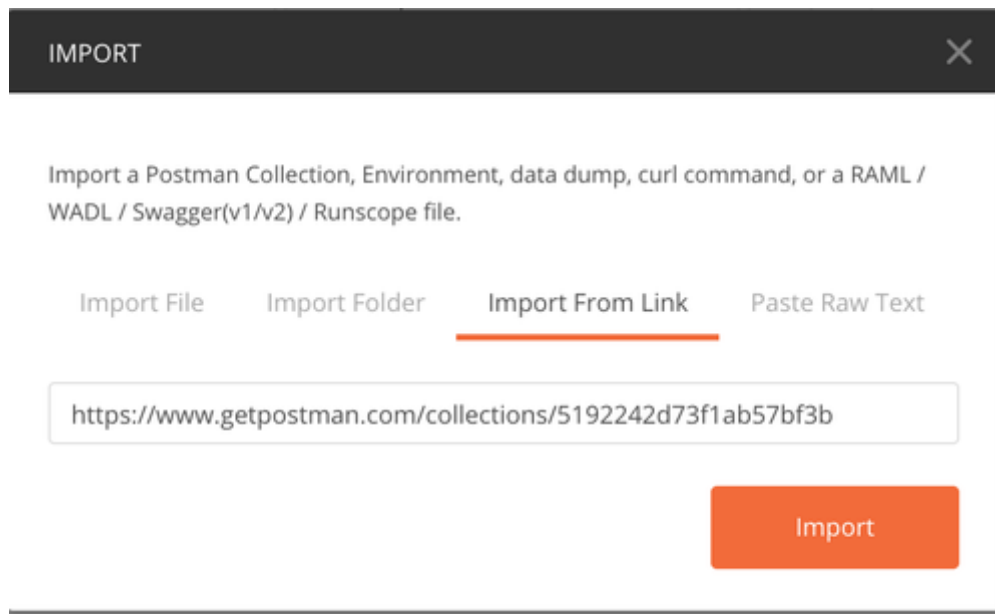
To run unit tests, do the following:

- Open the project in IntelliJ after downloading the repo
- Right click on the test directory
- Choose Run 'All Tests'



### Running Postman Tests

- Open Postman
- Go to File > Import
- Choose Import From Link and paste the Postman test suite URL in the **Postman Tests** section above

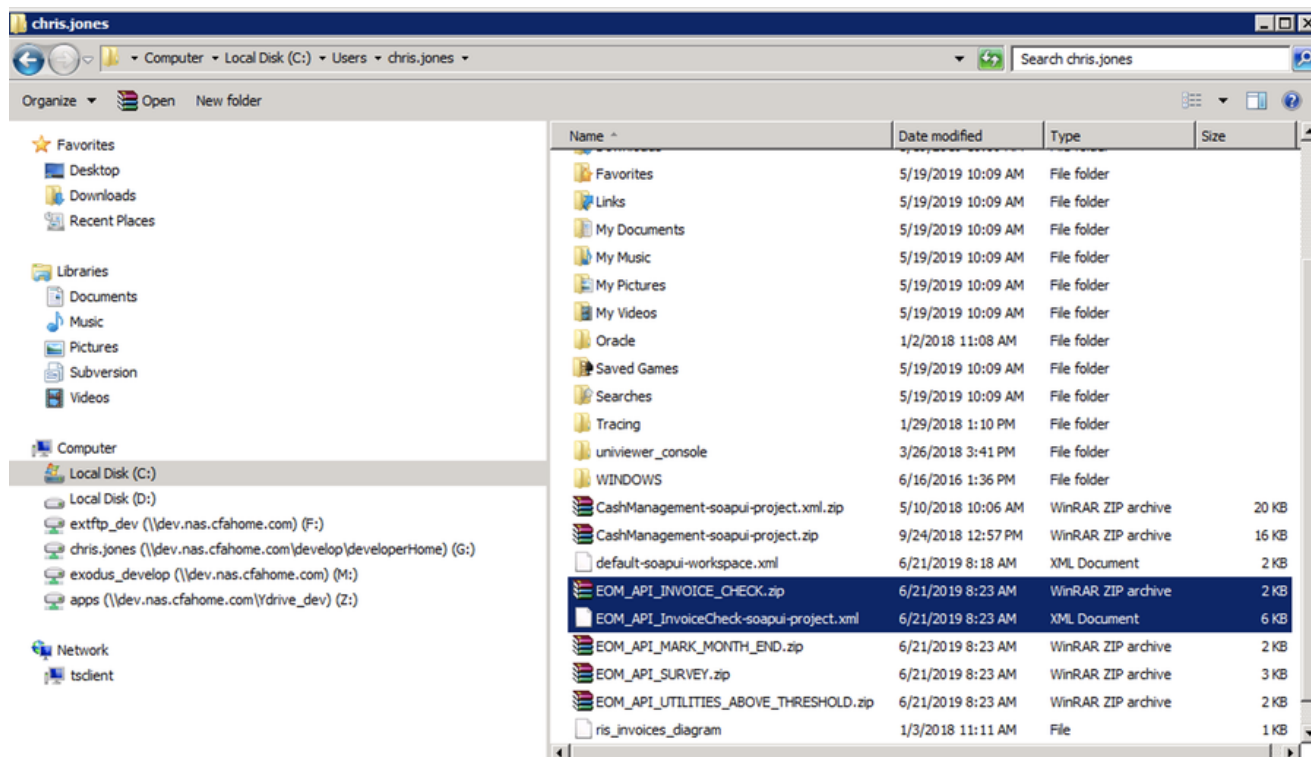


- Run an individual test or all tests.

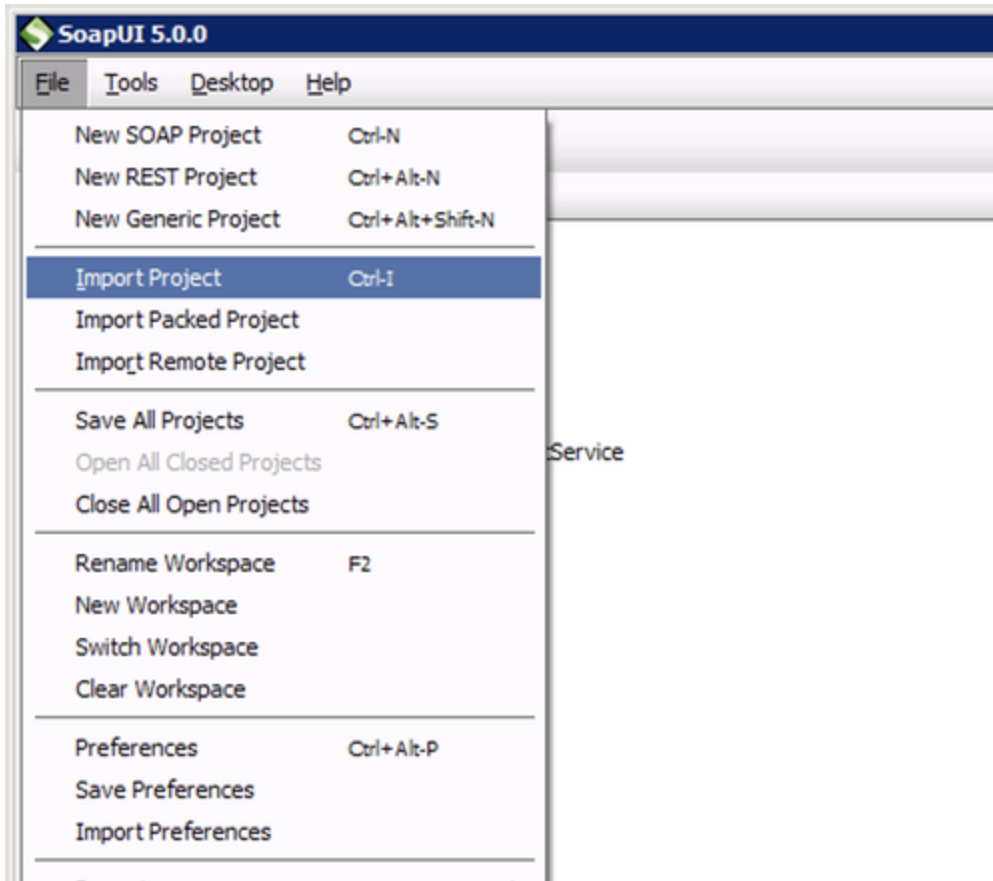
### Running SOAPUI Tests

To run SOAPUI tests, do the following:

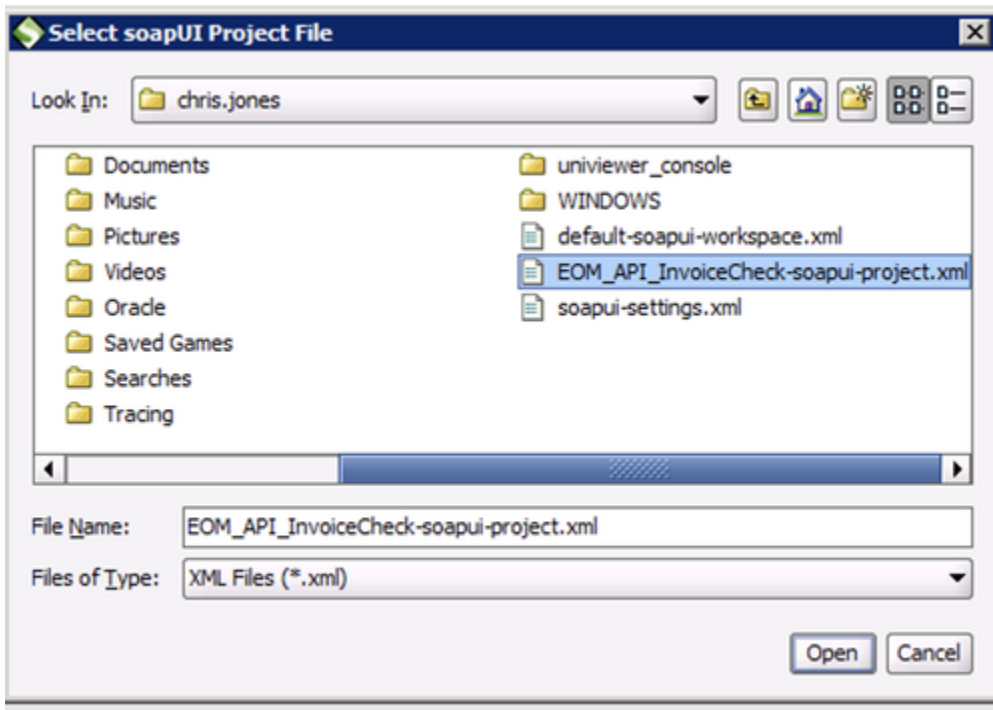
- Unzip the desired SOAPUI test zip file (an xml file should appear)



- Open SOAPUI and choose File > Import Project



- Choose the xml file that was created when the zip file was unzipped



### Running the App

EOM API was designed to run in the managed data center on CFA's custom configured Tomcat application server. Therefore, Spring Boot should not be used. Before running EOM API, make sure you have Tomcat downloaded and running locally on your machine. If you have not done that, please see the following documentation: [How to install Tomcat for local development](#)

Once Tomcat is downloaded onto your machine, complete the following steps to run EOM API locally:

- Open the terminal (assuming you're using a mac)
- cd to the tomcat-85 directory
- cd to the bin directory
- Run the following command to start the Tomcat application server
  - ./catalina.sh jpda start
- Run the following command to verify that the server is running
  - ps -A | grep tomcat
- cd to the eom-api directory
- Run the following command to build and deploy the EOM API app
  - t8.sh clean package tomcat7:redploy
- If the deployment was successful, then you should be able to go to <http://localhost:20080/eom-api/v2/api-docs> and get a successful response.

## Design

All requests should use Basic Auth and the dev\_wsc\_inform user (DEV).

The API has the following endpoints.

Data Point	Payload	API Endpoint	HTTP Method	Example G
Wage Accrual	{ "locationNum": "01919", "businessPeriod": "2017-02-01", "userGuid": "xxxx", "value": 100000 }	DEV: <a href="https://dev.ext.services.cfahome.com/eom-api/v1/survey/wage-accrual">https://dev.ext.services.cfahome.com/eom-api/v1/survey/wage-accrual</a>	POST	N/A
Refills	{ "locationNum": "01919", "businessPeriod": "2017-02-01", "userGuid": "xxxx", "value": 10 }	DEV: <a href="https://dev.ext.services.cfahome.com/eom-api/v1/survey/refills">https://dev.ext.services.cfahome.com/eom-api/v1/survey/refills</a>	POST	N/A
Comments	{ "locationNum": "01919", "businessPeriod": "2017-02-01", "userGuid": "xxxx", "value": "wow! this is another comment!" }	DEV: <a href="https://dev.ext.services.cfahome.com/eom-api/v1/survey/comments">https://dev.ext.services.cfahome.com/eom-api/v1/survey/comments</a>	POST	N/A
Expenses To Be Transferred	{ "locationNum": "01919", "businessPeriod": "2017-02-01", "userGuid": "xxxx", "transfers": [ {  "destinationLocationNum": "00001", "glAccountTokenId": 1247, "description": "this is a description", "amount": 100 }, {  "destinationLocationNum": "00002", "glAccountTokenId": 1247, "description": "this is also a description", "amount": 200 } ] }	DEV: <a href="https://dev.ext.services.cfahome.com/eom-api/v1/survey/expense-transfers">https://dev.ext.services.cfahome.com/eom-api/v1/survey/expense-transfers</a>	POST	N/A

Unpaid Invoice/Expense	{ "locationNum": "01919", "businessPeriod": "2017-02-01", "userGuid": "xxxx", "accruals": [ { "glAccountTokenId": 1247, "description": "this is a description", "amount": 100 }, { "glAccountTokenId": 1247, "description": "this is also a description", "amount": 200 } ] }	DEV: <a href="https://dev.ext.services.cfahome.com/eom-api/v1/survey/unpaid-expenses">https://dev.ext.services.cfahome.com/eom-api/v1/survey/unpaid-expenses</a>	POST	N/A
EOM Rules	{ "locationNum": "01919", "businessPeriod": "2017-02-01", "userGuid": "xxxx", "rules": [ { "ruleType": "accrual", "measurementType": "dollars", "amount": 100, "glAccountTokenId": 1274 }, { "ruleType": "reversal", "measurementType": "percentageOfSales", "amount": 50, "glAccountTokenId": 1274 }, { "ruleType": "reversal", "measurementType": "percentageOfNetProfit", "amount": 25, "glAccountTokenId": 1185 } ] }	DEV: <a href="https://dev.ext.services.cfahome.com/eom-api/v1/survey/rules">https://dev.ext.services.cfahome.com/eom-api/v1/survey/rules</a>	POST	N/A
Mark Month End	{ "businessPeriod": "2017-04-01",  "locationNum": "01919", "userGuid": "123456" }	DEV: <a href="https://dev.ext.services.cfahome.com/eom-api/v1/mark-month-end">https://dev.ext.services.cfahome.com/eom-api/v1/mark-month-end</a>	POST	N/A
Utilities Above Threshold	N/A	DEV: <a href="https://dev.ext.services.cfahome.com/eom-api/v1/utilities-above-threshold">https://dev.ext.services.cfahome.com/eom-api/v1/utilities-above-threshold</a>	GET	locationNum
Invoice Check	N/A	DEV: <a href="https://dev.ext.services.cfahome.com/eom-api/v1/invoice-check">https://dev.ext.services.cfahome.com/eom-api/v1/invoice-check</a>	GET	locationNum

Inventory Cost Summary	<pre>{   "locationNumber":"01919",   "businessPeriod":"2017-02-01",   "inventorySummaries":[     {       "inventoryType":"FOOD",       "amount":1     },     {       "inventoryType":"PAPE",       "amount":2     },     {       "inventoryType":"NON_FOOD",       "amount":3     }   ] }</pre>	DEV: <a href="https://dev.ext.services.cfahome.com/eom-api/v1/inventory-summary">https://dev.ext.services.cfahome.com/eom-api/v1/inventory-summary</a>	POST	N/A
Inventory Cost Details	<pre>{   "locationNumber":"01919",   "itemCountDate":"2017-02-28",   "itemCountDetails":[     {       "inventoryItemId":1,       "costEffectiveDate":"2017-02-01",       "atomicCurrentCost":1,       "itemCount":1,       "extendedCost":1     },     {       "inventoryItemId":2,       "costEffectiveDate":"2017-02-02",       "atomicCurrentCost":2,       "itemCount":2,       "extendedCost":2     },     {       "inventoryItemId":3,       "costEffectiveDate":"2017-02-03",       "atomicCurrentCost":3,       "itemCount":3,       "extendedCost":3     }   ] }</pre>	DEV: <a href="https://dev.ext.services.cfahome.com/eom-api/v1/inventory-details">https://dev.ext.services.cfahome.com/eom-api/v1/inventory-details</a>	POST	N/A

<p>No Payment Accrual Reason</p>	<pre>{   "locationNum": "01919",   "businessPeriod": "2017-02-01",   "userGuid": "xxxxx",   "noPaymentAccrualReasons": [     {       "glAccountTokenId": 1060,       "reason": "Who needs trash?!"     },     {       "glAccountTokenId": 1056,       "reason": "Who needs a phone?!"     },     {       "glAccountTokenId": 1020,       "reason": "Who needs electricity?!"     },     {       "glAccountTokenId": 1066,       "reason": "Who needs water?!"     },     {       "glAccountTokenId": 1096,       "reason": "Who needs a cell phone?!"     },     {       "glAccountTokenId": 1026,       "reason": "Who needs gas?!"     }   ] }</pre>	<p>DEV: <a href="https://dev.ext.services.cfahome.com/eom-api/v1/survey/no-payment-accrual-reason">https://dev.ext.services.cfahome.com/eom-api/v1/survey/no-payment-accrual-reason</a></p>	<p>POST</p>	<p>N/A</p>
--------------------------------------	--------------------------------------------------------------------------------------------------------------------------------------------------------------------------------------------------------------------------------------------------------------------------------------------------------------------------------------------------------------------------------------------------------------------------------------------------------------------------------------------------------------------------------------------------------------------------------------------------------------------------------------------------------	---------------------------------------------------------------------------------------------------------------------------------------------------------------------------------------------	-------------	------------